



THE EVOLUTION OF COVID-19: MOVING TREATMENT TO THE PRIMARY CARE SETTINGS

Presented by Trinidad Solis, MD, MPH and Laszlo Madaras, MD, MPH, FAAFP, SFHM

March 28, 2023



Conflict of Interest Disclosure

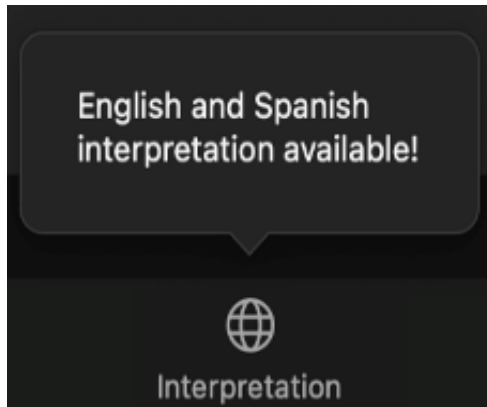
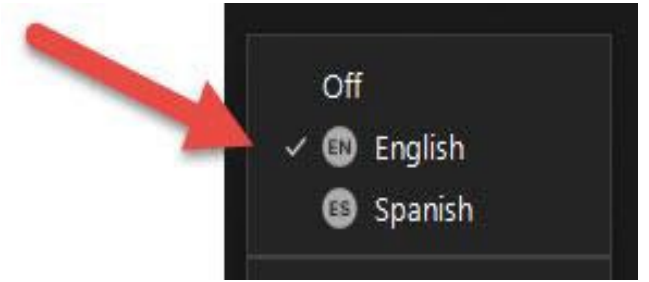
We have no relevant financial relationships that relate to this presentation, nor do we have any relevant financial relationships with ineligible companies whose products or services are related to pertinent therapeutic areas.



SIMULTANEOUS INTERPRETATION ZOOM

From your computer's Zoom toolbar, click on the **Interpretation icon (globe icon)**. Select your desired language in the pop-up menu. This will be the language you hear during the presentation.

From your **Cellphone**, click the "more options" and select Interpretation to select your desired language. Simultaneous



FUNCION DE INTERPRETACION SIMULTANEA

Desde su pantalla por computadora en la barra de herramientas, pulse en el icono de Interpretación/que se ve como un mundo, un menú aparecerá, seleccione el lenguaje en que quiere escuchar.

Desde su teléfono pulse en más opciones y seleccione interpretación y elija el lenguaje que quiera escuchar.

Continuing Education

As an accredited provider of continuing nursing education by the American Nurses Credentialing Center's Commission on Accreditation, MCN will offer nursing credit for this presentation. MCN has also received approval for continuing medical education credit by the American Academy of Family Physicians.



In order to claim credit, attendees must submit the post session evaluation at the end of the presentation.



MIGRANT CLINICIANS NETWORK



A force for health justice

Our mission is to create practical solutions at the intersection of vulnerability, migration and health

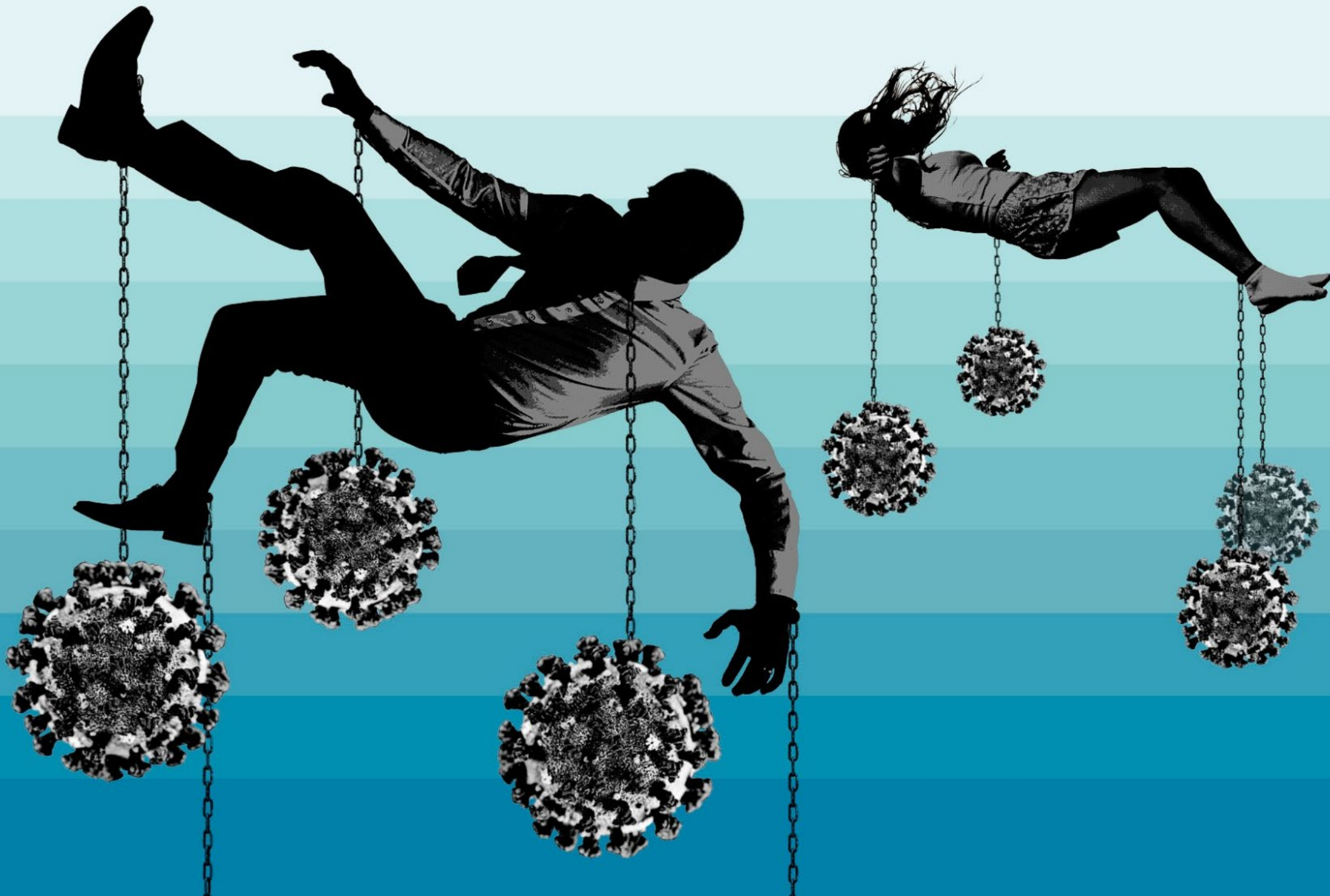
We envision a world based on health justice and equity, where migration is never an impediment to well-being.



Established in 1994, the National Hispanic Medical Association (NHMA) is a non profit association representing the interests of 50,000 licensed Hispanic physicians across the United States.

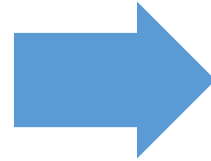
NHMA's mission is to empower Hispanic physicians to lead efforts to improve the health of Hispanic and other underserved populations, in collaboration with Hispanic state medical societies, residents, medical students, as well as public and private sector partners.

For more information, please visit www.nhmamd.org



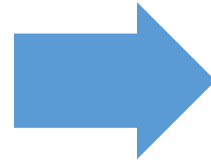
What we knew then...and now

Early intubation



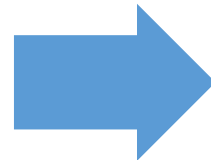
Avoid intubation

Early use of steroids



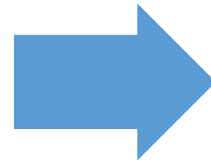
Steroids for hospitalized hypoxia

Happy hypoxics



Use O2 and BiPAP earlier

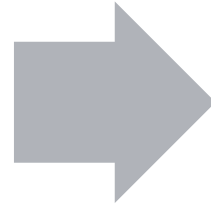
Convalescent Plasma use



No longer using plasma

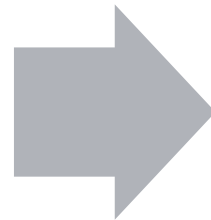
What we knew then...and now

Vaccination to prevent covid cases



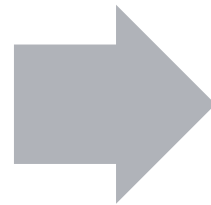
No prevention/less hospitalization and death

Respiratory



Respiratory, Gastrointestinal, Vascular

Covid-19 infection begin/end



Long (haul) Covid



**HEALTHY
FRESNO
COUNTY**
Better Together

Expanding Access to COVID-19 Treatments in the Primary Care Setting

Dr. Trinidad Solis

Deputy Health Officer, Fresno County Department of Public Health

March 28, 2023



Department of Public Health
www.fcdph.org

COVID-19 Updated Boosters

- ▶ The updated COVID-19 booster (bivalent vaccine) provides protection against the original strain of COVID-19 and the Omicron subvariants BA.4 and BA.5
- ▶ The FDA and CDC authorized the updated booster for everyone 6 months and older
- ▶ Updated boosters can be administered at least 2 months after completion of the primary series or last booster dose

Updated COVID-19 Booster: Children 6 Months - 5 Years

- ▶ **Pfizer - Update:**

- ▶ Children ages 6 months through 4 years who completed the 3-dose Pfizer primary series (original monovalent doses) more than 2 months ago are now eligible to receive an updated booster.

- ▶ **Moderna:**

- ▶ Children ages 6 months through 5 years who previously completed a Moderna primary series are eligible to receive a Moderna bivalent booster 2 months after their final primary series dose.

COVID-19 Vaccine Schedule

Routine Schedule	
Age*	Vaccine
6 months–4 years	Pfizer–Infant/Toddler 1st Dose → 3-8 weeks [^] → 2nd Dose → ≥8 weeks → 3rd Initial Dose ● Pfizer Bivalent [®]
6 months–5 years	Moderna–Infant/Toddler 1st Dose → 4-8 weeks [^] → 2nd Dose
5–11 years	Pfizer–Pediatric 1st Dose → 3-8 weeks [^] → 2nd Dose
6–11 years	Moderna–Pediatric 1st Dose → 4-8 weeks [^] → 2nd Dose
12+ years	Moderna–Adol/Adult 1st Dose → 4-8 weeks [^] → 2nd Dose
12+ years	Pfizer/Adol/Adult 1st Dose → 3-8 weeks [^] → 2nd Dose
12+ years	Novavax 1st Dose → 3-8 weeks [^] → 2nd Dose
18+ years	Janssen (J&J) Pfizer/Moderna/Novavax preferred** 1st Dose

≥2 months

Bivalent Booster[†]

Moderna:

- 6 months–5 years
- 6+ years

Pfizer:

- 5-11 years
- 12+ years

(For people who previously received a monovalent booster dose(s), the bivalent booster is administered at least 2 months after the last monovalent booster dose.)

Children aged 6 months to 4 years who completed the Moderna primary series are eligible for the Moderna bivalent booster only.

Children aged 5 years who completed the Pfizer primary series are eligible for the Pfizer bivalent booster only.)

Racial and Ethnic Disparities in Outpatient Treatment of COVID-19

- ▶ CDC Morbidity and Mortality Weekly Report (MMWR):
 - ▶ Boehmer TK, Koumans EH, Skillen EL, et al. **Racial and Ethnic Disparities in Outpatient Treatment of COVID-19 – United States, January-July 2022.** MMWR Morb Mortal Wkly Rep 2022;71:1359-1365. DOI: <http://dx.doi.org/10.15585/mmwr.mm7143a2>
 - ▶ **Study Findings:** During April-July 2022, the percentage of COVID-19 patients aged ≥ 20 years treated with Paxlovid was 36% lower among Black patients relative to White patients and 30% lower among Hispanic patients relative to non-Hispanic patients

Therapeutic Management of Nonhospitalized Adults with COVID-19

Preferred therapies, listed in order of preference by the [NIH](#) COVID-19 Treatment Guidelines Panel:

- ▶ Ritonavir-boosted nirmatrelvir (Paxlovid)
- ▶ Remdesivir

Alternative therapy. For use when the preferred therapies are not available or clinically appropriate:

- ▶ Lagevrio (Molnupiravir)

COVID-19 Oral Antiviral Treatments

- ▶ Administration for Strategic Preparedness and Response (ASPR) COVID-19 [Test to Treat Program](#)
 - ▶ **Paxlovid** - oral antiviral medication, 12 y/o and older, at least 88 lbs
 - ▶ **Molnupiravir**- oral antiviral medication, 18 y/o and older, avoid in pregnancy
 - ▶ The COVID-19 oral antiviral treatments should be taken within the first 5 days of COVID-19 symptoms
- ▶ Treatment is recommended for the following individuals who are at **high-risk** of developing severe COVID-19 illness:
 - ▶ Older age (age 50 or older)
 - ▶ Cancer, chronic kidney, liver, or lung disease (such as asthma, COPD)
 - ▶ Diabetes, obesity
 - ▶ Heart Conditions
 - ▶ Immunocompromised

Clinical Considerations for Prescribing Oral Antiviral Treatments

- ▶ Check for drug interactions
 - ▶ ASPR's [Drug Interaction Checker](#)
 - ▶ e.g., If a patient is taking a statin: discontinue use of the statin during the 5 days of Paxlovid treatment and for 5 days after completing Paxlovid
- ▶ Paxlovid Renal Dose is available for people with moderate renal impairment (eGFR > 30 mL/min to < 60 mL/min)
- ▶ Paxlovid is **not recommended** for people with severe renal and hepatic impairment

Side Effects of COVID-19 Oral Antiviral Treatments

- ▶ A bitter or metallic taste in the mouth is the most common side effect of Paxlovid
- ▶ GI symptoms
- ▶ COVID-19 Rebound: May occur between 2 and 8 days after initial recovery and is characterized by a recurrence of COVID-19 symptoms or a new positive viral test after having tested negative

Sharing COVID-19 Treatment Educational Materials with Patients

- ▶ Provide COVID-19 bilingual materials in clinic waiting rooms, urgent cares, and emergency rooms (e.g., [HHS materials](#))
- ▶ Collaborating with community health workers to disseminate COVID-19 educational materials

COVID-19 Prevention Measures

- ▶ **COVID-19 prevention tips:**
 - ▶ Get vaccinated, boosted (and treated)
 - ▶ Wear a mask in crowded, public, indoor spaces
 - ▶ Wash your hands
 - ▶ Stay at home if you're sick and get tested for COVID-19
- ▶ **Strategies to promote COVID-19 prevention and treatment actions:**
 - ▶ Promote COVID-19 vaccination and treatment campaigns through social media to educate the Latino community
 - ▶ Lead by example

Going Beyond the Clinic Walls



Fresno County-
Agricultural
Workplace
COVID-19
Vaccination
Event

Fresno County: Rural Mobile Health Program

- ▶ The Rural Mobile Health Program aims to make healthcare access more equitable for farmworkers and for people living in the rural areas of Fresno County.



Summary

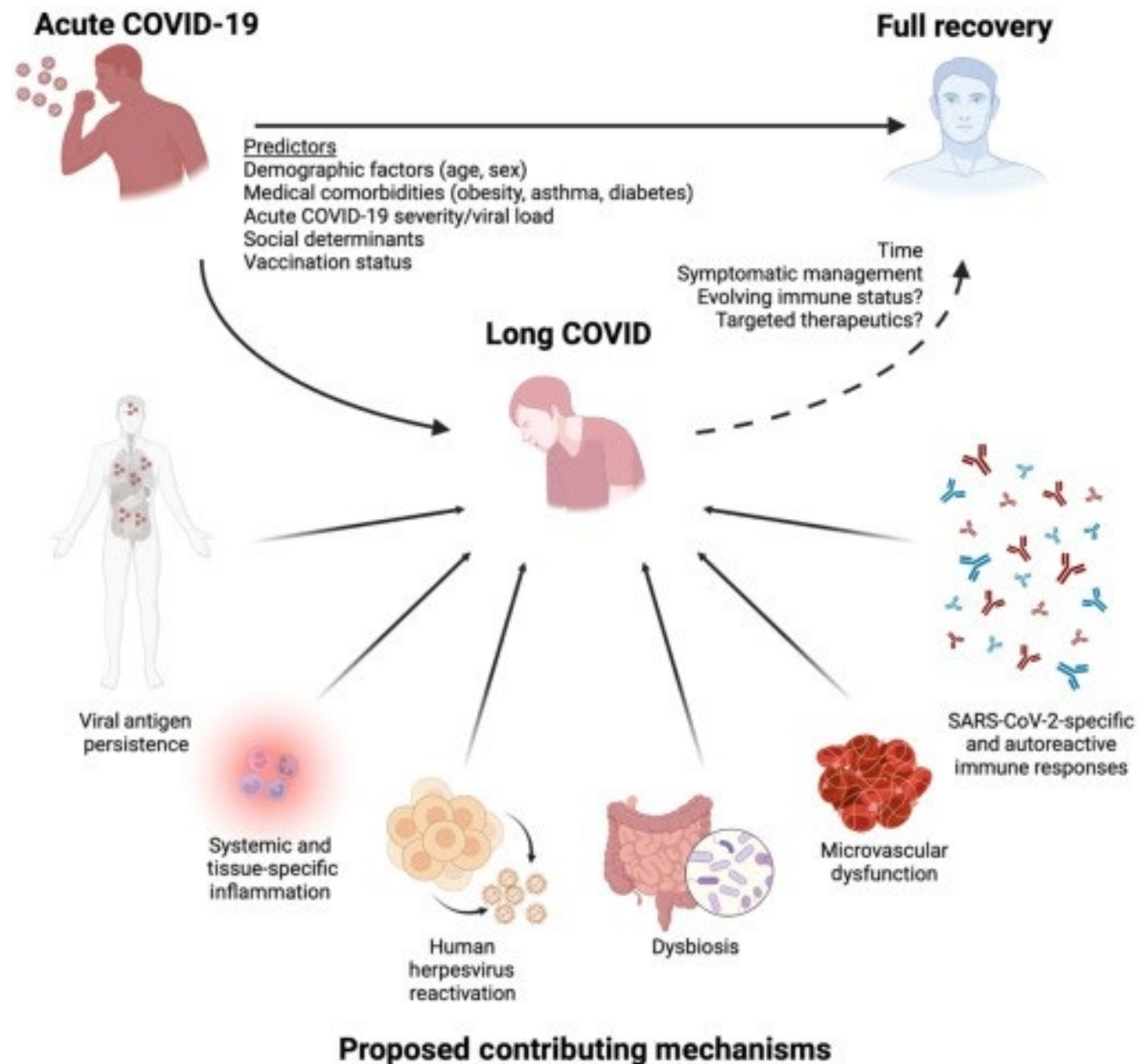
- ▶ The COVID-19 vaccines and booster are recommended for people 6 months and older. The COVID-19 vaccines greatly reduce the risk of hospitalization and death from COVID-19.
- ▶ COVID-19 treatments are not a substitute for getting vaccinated. The COVID-19 medications are recommended for people whose age or underlying medical conditions place them at **high-risk** of becoming severely ill from COVID-19.

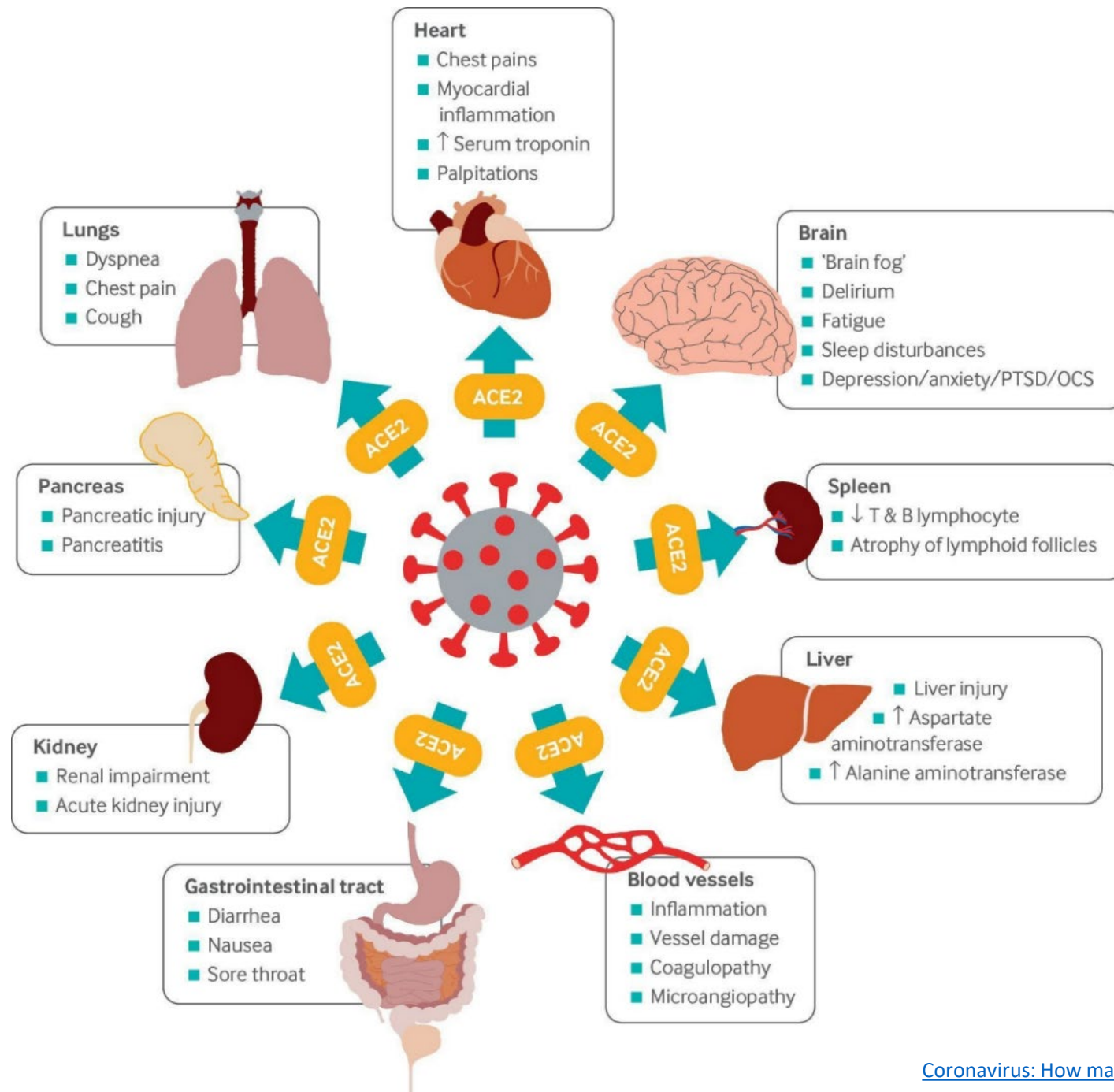
Thank You!




A man in profile, looking down with his hand on his forehead, suggesting stress or frustration. The background is a blurred outdoor setting with blue and white elements.

A brief discussion of Long COVID
(more to come in subsequent
webinars...





A woman with long dark hair, wearing a black polka-dot top, is shown in profile from the chest up. Her right hand is raised to her face, with fingers spread. The background is a teal color with several white virus-like icons (spheres with spikes) and a faint, semi-transparent anatomical diagram of a human torso showing the lungs and heart. The overall tone is clinical and informative.

What patients may experience...

- Acute covid is the first 3 weeks
- Post-acute covid is after 3 weeks
- Long covid is defined as beginning 3 months after acute infection
- There is no known endpoint
- Affects multiple organs
 - Lungs, persistent shortness of breath
 - Brain, headaches and brain fog, potential for stroke
 - Circulation, clots in the leg (DVT), lungs (pulmonary embolism)
 - Heart, myocarditis

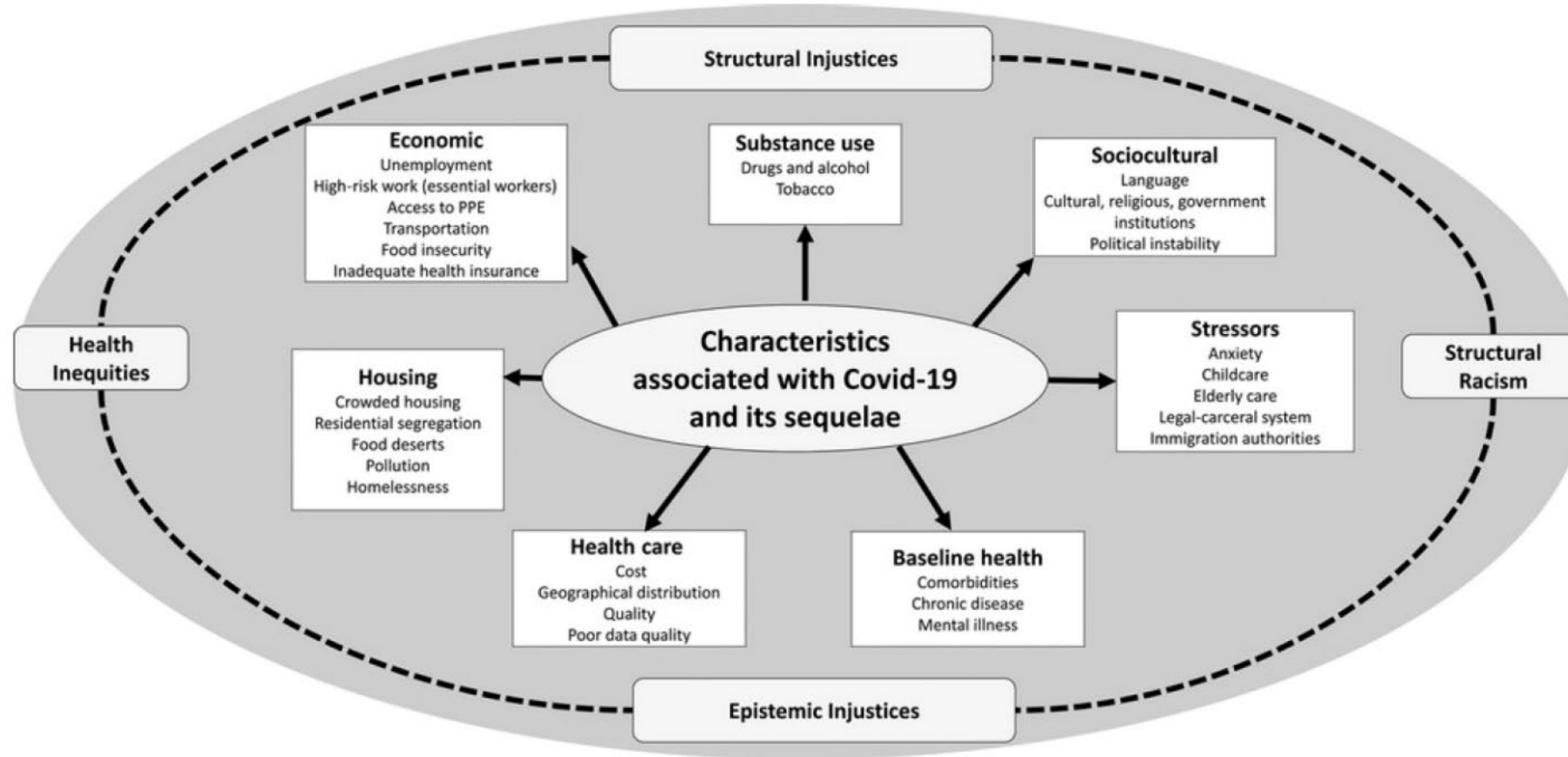


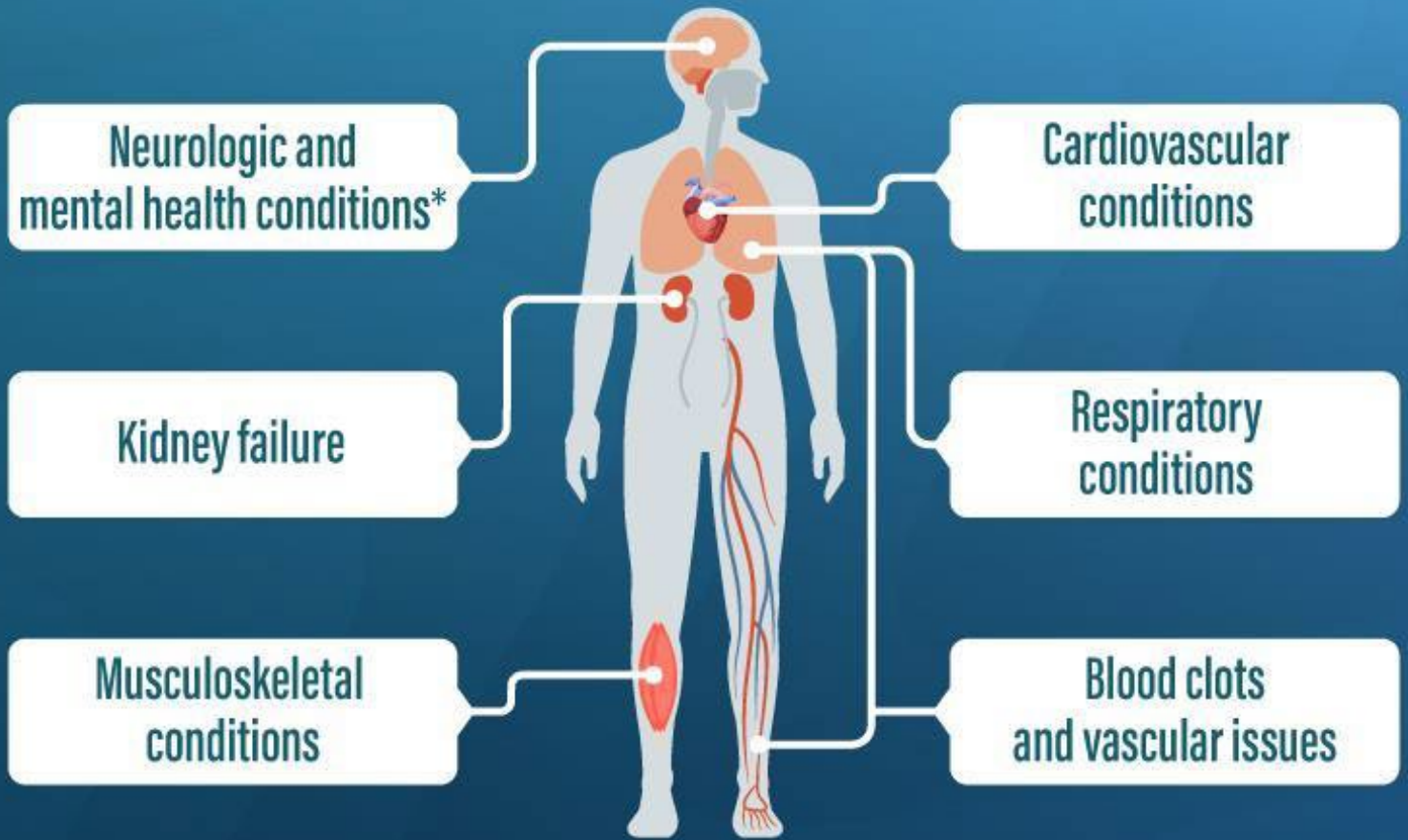
FIGURE 6-3 Characteristics associated with COVID-19 and Long COVID.

SOURCE: Republished with permission of John Wiley & Sons, from Berger et al., 2021, p. 523, in Zackary Berger presentation, March 22, 2022.

The Long-Covid Scenario Unfolds

- ✓ Is the person truly sick and if so with what?
- ✓ Getting a Covid test: Where? PCR, Rapid. Finding them. Waiting for results
- ✓ What to do during the waiting time? Range: 15 mins to 48 hours
- ✓ If positive, can the person isolate? If an adult, decisions: ? go to work, ? tell employer, isolate, childcare/parental care,
- ✓ If child is positive: how do you isolate a child? Who takes care of the child?
- ✓ How to quickly learn what to do: monitor for serious illness, treat for comfort
- ✓ When to call PCP, when to go to urgent care, when to go to the ED
- ✓ What if the person has underlying medical issues? Which ones matter?
- ✓ Does the person qualify for a treatment?
(<https://www.yalemedicine.org/news/covid-19-treatment-drugs>)
- ✓ Steps to get a treatment started within the first 5 days

Approximately
1 in 5 adults
ages 18+ have a
health condition
that might be related to
their previous COVID-19
illness, such as:



**Talk to your health care provider
if you have symptoms after COVID-19**



bit.ly/MMWR7121

* Adults aged 65 and older at increased risk

MMWR

Lack of Clarity Contributes to Difficult Adjustment

- No universal definition
- Not many specialized services yet
- Both health care workers and family members may greet a person's symptoms with skepticism or frustration due to no clear definitions and protocols established
- Long wait times for service even if you live near a center



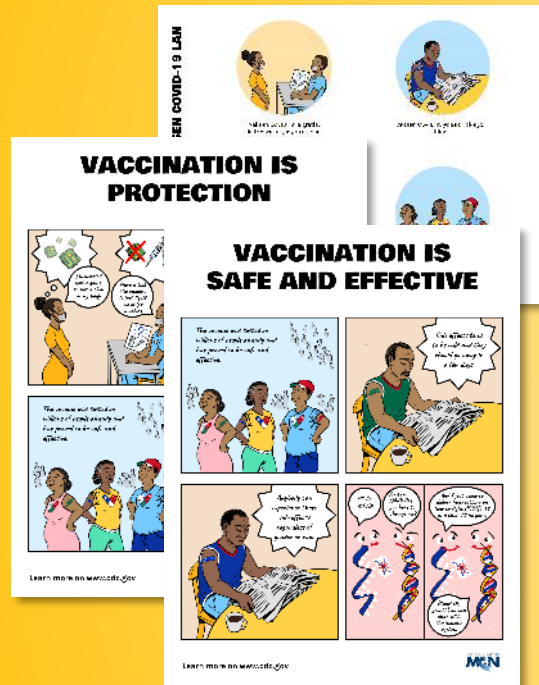
FAQ: COVID-19 and Migrant, Immigrant, and Food & Farm Worker Patients

Available in English & Spanish!

Visit migrantclinician.org/COVID19-FAQ



MCN's FAQ has
been recognized by
the Digital Health
Awards.



“Vaccination Is...” Communication Campaign

MCN has developed fully editable materials to help promote vaccination against COVID-19 in any community.

Print | Social Media | Graphics | Videos | Templates

Fully Editable Materials & Templates

- ✓ **All materials can be edited** in PowerPoint / Google Slides
- ✓ **Social media templates** for creation of graphics to accompany posts and frames for profile pictures.
- ✓ **Video templates** in Canva allow communities to lend their own voices to vaccination efforts.

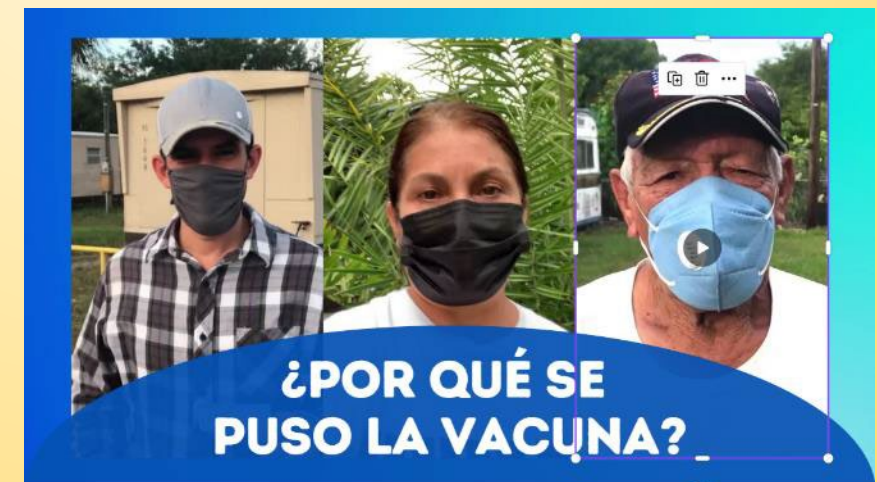
Poster templates for
community photos



Illustrations available
for use in materials



Add videos of
support to a
template and
share online.



Evaluation link and QR Code

The Evolution of COVID-19:
Moving Treatment to the Primary
Care Setting



Your evaluations are important to us! MCN uses your responses to guide, adapt, and improve our online educational offerings. Please take a few minutes to submit the evaluation for this webinar. If you would like to receive a Certificate of Attendance, Continuing Nursing Education, or Continuing Medical Education, submission of the evaluation is required.

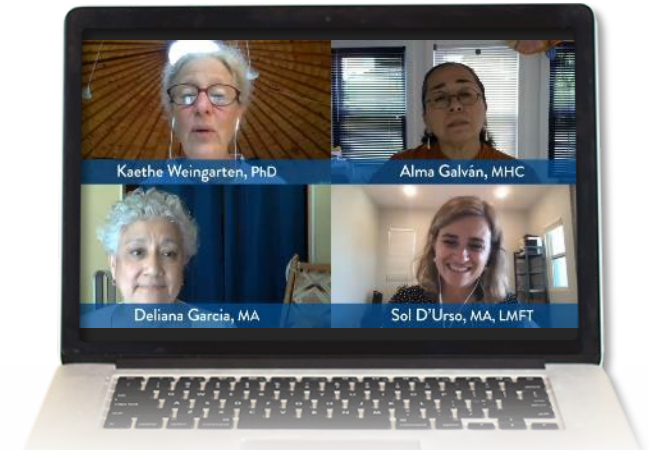
Connect with MCN!



Access our latest resources



Get updates from the field



Attend our virtual trainings

and a lot more at

www.migrantclinician.org