

Strength in Unity

NACCHO Learning Collaborative

Week Six

MAY 19, 2022



Agenda

A decorative horizontal line consisting of a series of small, light-colored dots scattered across the width of the page, positioned below the title.

Calendar Review

- Upcoming events and LCs

Community Updates

- Rebirth, Inc.
- Haitian Development Center of Delmarva

COVID-19 Updates

- Dr. Ed Zuroweste

Capacity Review

- Resource Mapping
- Workplan

Calendar Review

- Biweekly Learning Collaborative
 - **June 2, 2022**
 - **June 16, 2022**
 - **June 30, 2022**
 - **July 14, 2022**
- Haitian Flag Day Celebration
 - May 22, 2022**
 - 3pm-8pm**
- Community Conversations Training: Part 2
 - TBD**



Rebirth, Inc.

- COMMUNITY UPDATE?
- LOOKING AHEAD...



Haitian Development Center of Delmarva

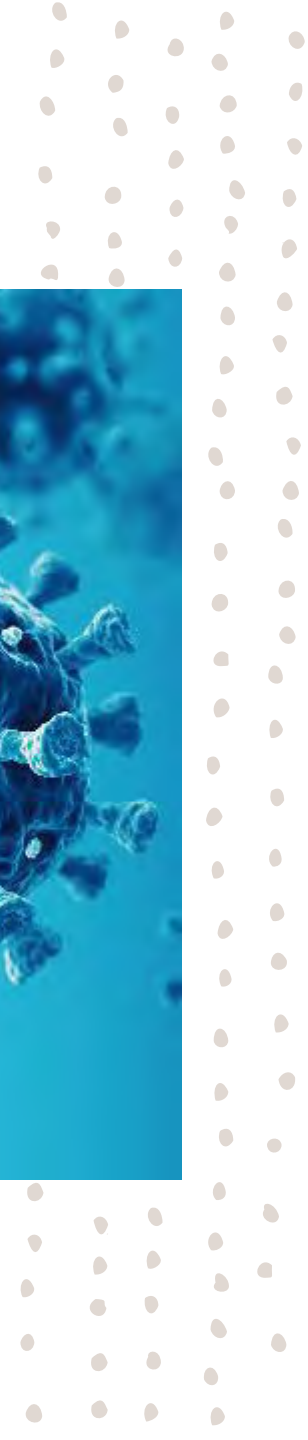
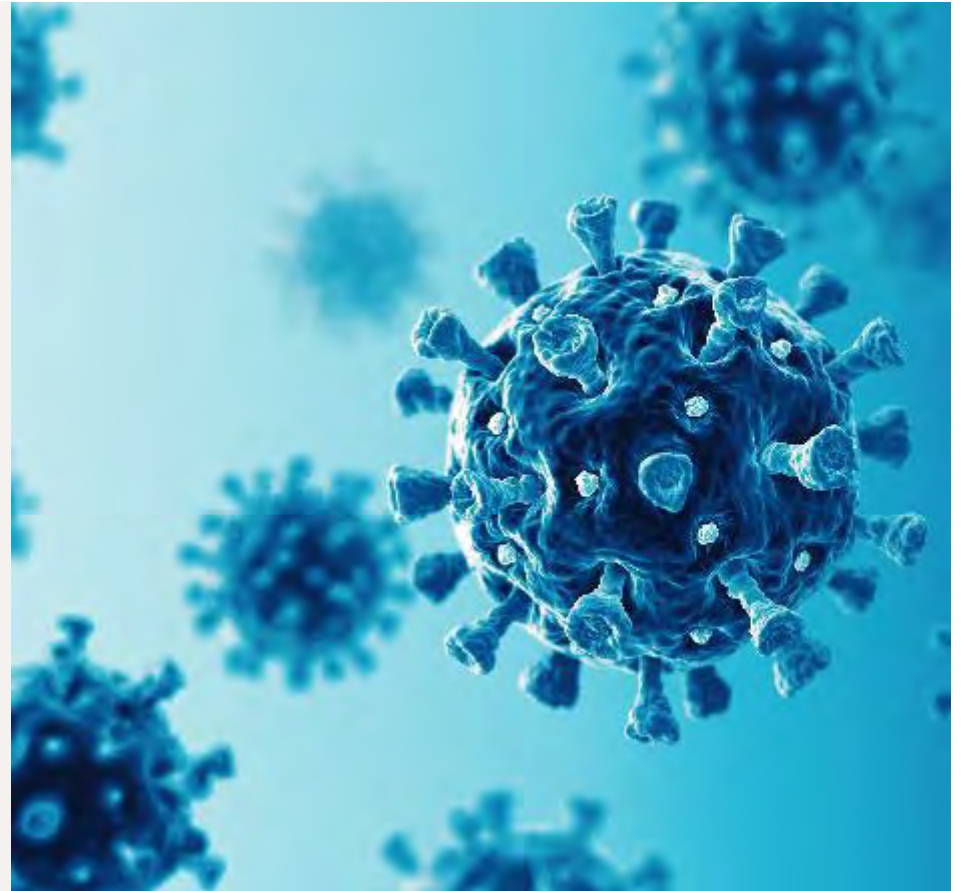
- COMMUNITY UPDATE?
- LOOKING AHEAD...



COVID-19 CLINICAL UPDATE

DR. ED ZUROWESTE

MAY 19, 2022



Know Your COVID-19 Community Level

In Wicomico County, Maryland, community level is **Medium.**


- Stay up to date with COVID-19 vaccines.
- Get tested if you have symptoms.
- Consider masking and other precautions.
- Report at home positive tests.

Updated: May 15, 2022

WHAT'S A COVID-19 COMMUNITY LEVEL?

- It's a new tool to help communities decide what prevention measures to take based on the latest data
- Every community in the United States is classified as:

Low	Medium	High
Limited impact on healthcare system, low levels of severe illness	Some impact on healthcare system, more people with severe illness	High potential for healthcare system strain; high level of severe illness

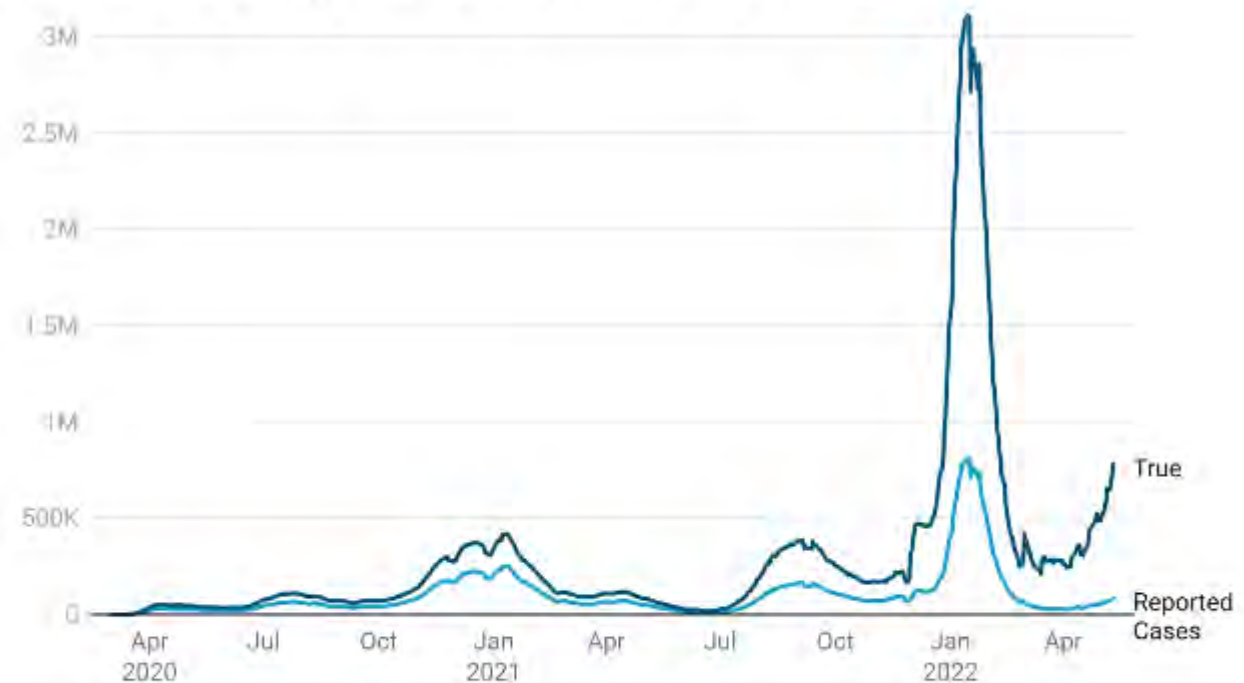
 [cdc.gov/coronavirus](https://www.cdc.gov/coronavirus)

15111021-0 11/25/2022

Infection Surge

- Good news: Global deaths are at their lowest levels thanks to increased vaccination and infection-induced immunity.
- Current infection surge is the “tip of the iceberg”.
 - Underreporting, lack of communication, and pandemic fatigue.
- Hospitalization rates are slowly increasing as well.

COVID-19 Daily Cases in U.S.: True vs. Reported



Created with Datawrapper

Prevention

- **Remember:**
 - Vaccinations and especially boosters provide broad protection against hospitalization, severe illness, death and long COVID.
 - Masking, ventilation, handwashing, and social distancing continue to reduce risk of infection.





Testing

- On Tuesday May 17, 2022, the White House announced the third round of free at home tests is now available.
- In this round, each household can receive 8 rapid antigen tests.
- Orders placed through <https://www.covid.gov/tests>
- Reporting positive at-home test results is important.
- Communicate with:
 - Your healthcare provider
 - Anyone in close contact
 - [Maryland COVID Positive At-Home Test Report Portal](#)

Treatment Options

- In December 2021, an antiviral—Paxlovid—was authorized for emergency use in the US.
- Treatment is taken twice a day for five days to slow viral replication.
- Paxlovid does not prevent infection.
- Paxlovid does prevent hospitalization and death by 90% among high-risk individuals.
- Prescription is required to obtain medication.



Boosters for children

- On Tuesday May 17, 2022, the Food and Drug Administration authorized the first COVID-19 booster dose for children ages 5 to 11.
- Children who have received their second shot at least 5 months ago are eligible to receive a third Pfizer shot.



Discussion

- **What do the rising cases mean for our messaging? Should we change our messaging?**
- **What does the information provided today mean for our community?**
- **What does the increase in cases mean for our own behavior?**



Capacity Review

Resource Mapping & Workplans



Resource Mapping

What is resource mapping?

- Resource mapping is the process of identifying what is **valuable** in your community and developing strategies for **mobilizing** those resources.

Why is resource mapping important?

- Resource map offers a clear **list, map, or directory** of the resources that are available to your target population.
- Current resources in place to implement a program.
- Builds upon the strengths of the community.

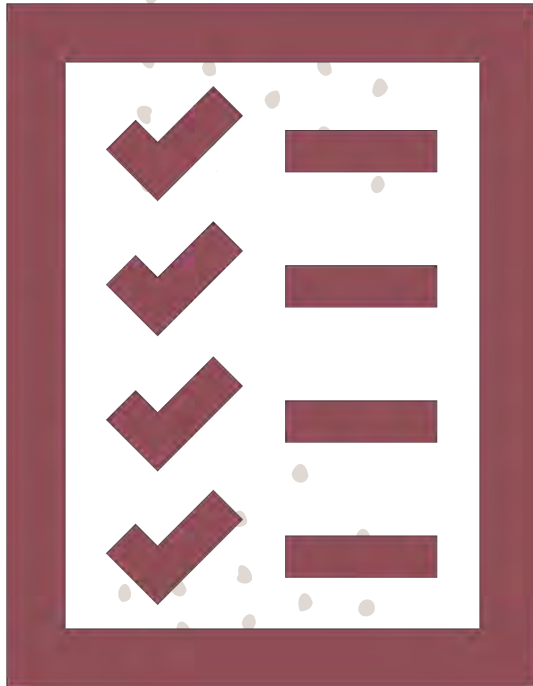
“There is no need to reinvent the wheel.”



Questions to think about...

1. Do any of the current programs or resources in the community serve a similar purpose?
2. If so, how are they the same or different?
3. Are any of these resources connected in some way (e.g., used in conjunction with one other, dependent on one another)?
4. Are there any gaps in your resources or areas with few programs or resources?
5. Are there any programs that are not used well or frequently? Why not?
6. Are there any programs that should be evaluated? How will you evaluate them?
7. What additional programs or activities are needed? Why?
8. What resources are missing in the community in which you are serving?
9. What resources are missing specifically for community health workers?
10. Are there any resources that are not used well or frequently? Why not?
11. What additional resources are needed for your community? Why?

Workplan Discussion



Throughout the project, there are certain things that are essential such as outreach events and activities, and the collection of data for outcome measures.

Your work plan is designed to keep track of all tasks, events and all other work that contributes to the implementation process of the program.

How have you used your current workplan?

How has your workplan helped you? Or not helped you?



FAQ: COVID-19 and Migrant, Immigrant, and Food & Farm Worker Patients

Updated on May 17, 2022

<https://www.migrantclinician.org/blog/2022/may/faq-covid-19-and-migrant-immigrant-and-food-farm-worker-patients.html>

LC 6: Evaluation

https://mcn.iad1.qualtrics.com/jfe/form/SV_difdMg7H5Ss0H30

Let's strive for 100% again!!

