

Risks and Health Effects Associated with Farmworker Tasks/Activities

Riesgos y Efectos en la Salud Asociados con las Actividades de los Trabajadores en el Campo

Identify each picture that shows the type of work or activities you do on the farm. Choose all the activities that you do.

Identifique la imagen que muestra el tipo de trabajo o actividades que hace en el campo. Escoja todas las actividades que usted hace.



Eliminando Maleza a Mano
Hand-Weeding



Agacharse
Bending



Levantando
Lifting



Cosechando a Mano Frutas y Vegetales
Hand-Harvesting Fruits & Vegetables



Podando Árboles y Viñas
Pruning Trees and Vines



Cosechando Cultivos en Campo
Harvesting Field Crops



Escalando
Climbing



Cosechando Árboles Frutales
Harvesting Tree Fruit



Cortando la Flor del Maíz
Detasseling Corn



Applicando Pesticidas
Pesticide Application



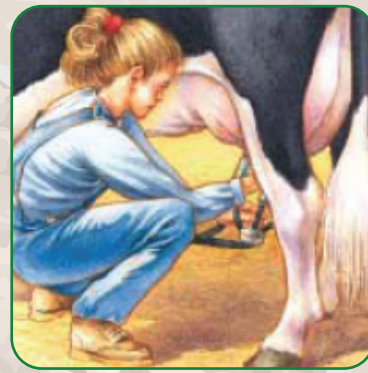
Trabajando Cerca del Agua
Working Near Water



Trabajando Aislado
Working in Isolation



Trabajando con Animales Grandes
Working with Large Animals



Ordeñando Vacas
Milking Cows



Reparación de Cercas
Repairing a Fence



Operación/Conducción de Vehículos
Operating/Driving a Vehicle



Transportación
Transportation



Trabajando Afuera
Working Outside



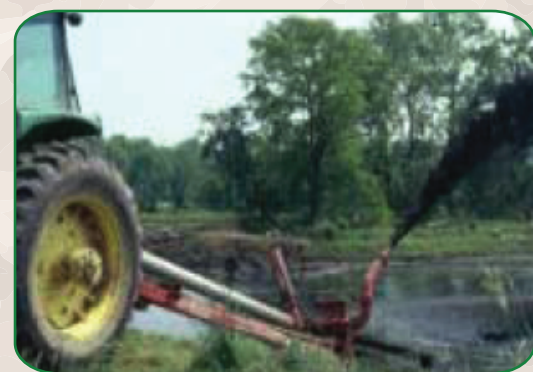
Cosechando Tabaco
Harvesting Tobacco



Trabajando con Granos/Paja
Working with Grain/Hay



Trabajando en la Composta (abono vegetal)
Composting



Bombeando/Agitando Estiércol en Hoyos
Pumping Out, Agitating Manure Pits



Trabajando en Áreas Húmedas
Working in Wet Areas

MCN
Migrant Clinicians Network
www.migrantclinician.org

This product was supported by Grant No. 1U45OH009568-01 from the National Children's Center for Rural and Agricultural Health and Safety (NCC) and National Institute for Occupational Safety and Health (NIOSH). Its contents are solely the responsibility of Migrant Clinicians Network and do not necessarily represent the official views of NCC and NIOSH.

Youth worker images are adapted and reproduced with permission from the National Children Center for Rural and Agricultural Health and Safety. Images copyrighted through Marshfield Clinic, Marshfield, Wisconsin.